

Monique Lewis



Dr. Monique Lewis is the founder of Impact Consultants, where she helps districts, schools, and organizations build cultures of excellence, equity, and measurable impact. But the seeds of that mission were planted long before entrepreneurship came into view. "Early in my career, I saw that challenges weren't about effort—they were about leadership," she said. "I pursued SPA to sharpen my ability to lead with systems-thinking, problem-solving, and purpose." SPA provided Dr. Lewis the foundation she needed to affect school systems and organizations through her executive leadership firm, Impact Consultants.

Foundations at SPA

When Dr. Monique Lewis applied to the Summer Principals Academy, she wanted more than a degree. "I was drawn to SPA because I wasn't just looking for a degree—I was looking for transformation," Dr. Lewis reflected.

"I wanted to become the kind of leader who drives equity, reimagines systems, and builds capacity at scale."

At SPA, Dr. Lewis developed skills in navigating difficult conversations around equity with emotional intelligence, leading systemic change, and cultivating environments where leaders can thrive. She highlighted the Emotional Intelligence training led by Dr. Marc Brackett of Yale University as a life-altering experience. "It changed how I lead, how I listen, and how I show up at work."

The most profound shift Dr. Lewis experienced was an expanded view of leadership itself. "SPA redefined leadership for me—as strategic, relational, and rooted in values," she explained.

"It's not about position. It's about presence, influence, and the ability to lead systems toward equity and excellence."





Leading Entrepreneurship

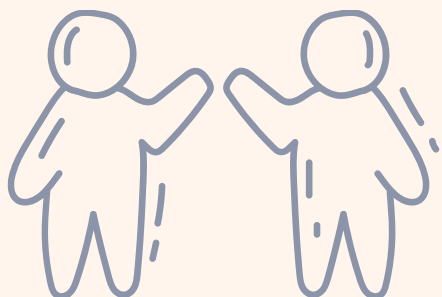
Expanding her perspective of leadership gave Dr. Lewis the confidence to explore entrepreneurial and advisory sectors, where equity and systems change serve as the cornerstones of her work, rather than as side initiatives. “SPA showed me that leadership isn’t confined to a title,” she said. “It’s about vision, collaboration, and execution”—skills that apply far beyond traditional roles in education.

As the founder of Impact Consultants, she works alongside educational institutions to activate transformational change through strategy, capacity-building, and executive coaching.

She uses the blueprint learned at SPA to lead with audacity and precision. When faced with challenges, she transforms “complexity into clarity” and turns “obstacles into opportunities.”

Dr. Lewis is quick to challenge the notion that educational leadership begins and ends with a position as a principal.

“Educational leadership is the art of moving people and systems toward a more just and effective future—regardless of your role. It’s about activating purpose-driven influence to build sustainable change across organizations, sectors, and communities.”



Looking Ahead

While Dr. Lewis remains committed to her current path of capacity-building and consulting, she sees endless possibilities ahead, whether embedded within institutions or working alongside them. What matters most is impact.

Dr. Lewis hopes SPA continues to elevate leaders whose paths lie outside traditional school roles. She suggests finding spaces for cross-sector learning and fostering networks beyond the school building. "We need thought partners. We need each other. That's how the legacy of SPA lives on."

To those considering the SPA journey, Dr. Lewis offers this advice:

"Approach SPA as a platform, not a program. Build your vision while you build your capacity. Invest in relationships that stretch you. And stay grounded in your 'why.' The work ahead will demand both courage and clarity."

